

HOW YOU CAN HELP

FINANCIAL: Make A Home Foundation is dependent on financial support from the community, corporate and personal sponsorship, grants and private donors. For a tax-deductible donation, please visit our website, www.mahfct.org

VOLUNTEER: We welcome volunteers from all backgrounds, ages and skill sets, who are interested in making a difference. Volunteering embraces community solidarity, builds trust amongst our alliances and supports MAHF's outreach. We invite you to join our mission and contribute your experience.

TO PURCHASE ITEMS: contact MAHFCT@gmail.com or call 527-5100

COMMUNITY PARTNERSHIPS

- ARC for Peace
- Action for Bridgeport Community Development (ABCD)
- Applied Behavioral Rehab Institute
- Alpha Community Services
- American Red Cross
- Association of Religious Communities
- Birthright
- Boys & Girls Club of Bridgeport
- Bridgeport Social Services
- Bristol Community Organization
- CanSupport
- Care Ways Career Resources
- Catholic Charities
- Connecticut Community Care
- CCCYMCA
- Center for Family Justice
- Center for Human Development
- Chelsea Place Care Center
- Child Guidance Clinic
- Childfirst/Department of Children and Families
- Connecticut Health Network
- Christ Church Greenwich
- Chrysalis Center
- City of Waterbury
- Community Mental Health Affiliates
- Columbus House Inc
- Community Renewal Team (CRT)
- Conger House
- Critical Times Intervention
- Connecticut CRT Supportive Services for Veterans Families
- Community Care
- Connecticut Husky Health
- Connecticut Veteran Affairs
- Connecticut Erera Community Care Center
- CT Department of Social Services
- CT Dept of Developmental Services
- CT Department of Mental Health and Addiction Services
- Family Intervention Center
- First Baptist Church
- Francis Xavier
- Family Services Woodfield (FSW)
- Greater Bridgeport Adolescent Pregnancy Program
- Greater Bridgeport Community Mental Health Center
- Harmony House
- Hartford Housing Authority
- Hispanic Health Council
- Homes for the Brave
- Hospitality Center Veterans Affairs Connecticut
- Iconn
- Independence Northwest
- Inspirica
- Keeping the Faith Counseling Services
- Kingdom life Community Resource Ctr
- Liberation Programs, Inc
- Midwest CT Council of Alcoholism
- Money Follows the Person
- My Sister's Place
- New Horizons
- New Opportunities
- Newtown Social Services
- Person to Person
- Positive Parenting
- Prudence Crandall Recovery Network of Programs
- Rehabilitation Associates
- Rushford Center
- Safe Haven
- Salvation Army
- St. Vincent DePaul
- StayWell Health Center
- Stepney Baptist Church
- STRIDE
- Supportive Housing Works
- The Jewish Federation
- The Kennedy Center
- The WorkPlace
- Thomaston Social Services
- United Community and Family Services
- Waterbury Hospital
- Western Connecticut Area Agency for Aging
- Western Connecticut Mental Health Network
- Wellmore Behavioral Health
- Wheeler Clinic
- Women's Center
- Workforce Alliance Inc

WWW.MAHFCT.org

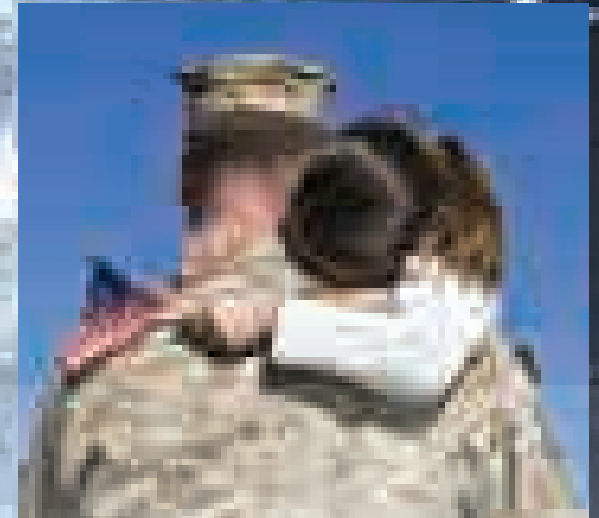


<https://twitter.com/mahfct>



<https://www.facebook.com/MakeAHomeFoundationCT>

©2015 Make A Home Foundation



HELPING VETERANS & FAMILIES IN NEED

PO Box 615

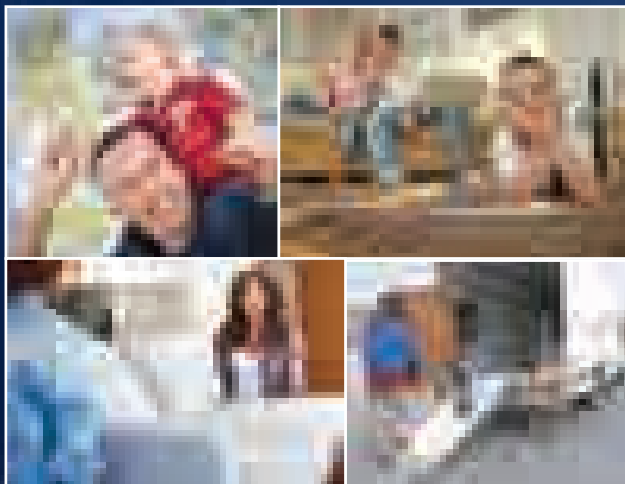
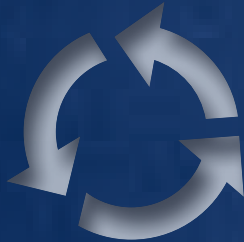
Newtown, CT 06470

Independent 501(c) (3)
(IRS Tax ID #27-2932637)
Not-for-profit

Office: (203) 527-5100
Fax: (203) 527-7136

OUR MISSION:

We help Veterans and families in need by providing household furnishings. Our furniture program allows us to brighten the lives of the people in need by bringing dignity, self-respect and promoting success into their new start. We do this while reducing the environmental footprint by keeping discarded furnishings out of our local landfills.



THOSE WE SERVE

Make A Home Foundation clients have been dramatically impacted. They are working hard to overcome crises of various and epic proportions by rebuilding their lives. We provide gently used furnishings to:

- Veterans
- Victims of natural disasters, fires and floods
- Parents and children escaping domestic violence
- Homelessness and poverty
- Disabilities, mental illness, physical illness
- Individuals transitioning out of shelters or halfway houses & getting into permanent housing
- Seniors

CALL TO DONATE WE PICK UP

Make A Home Foundation Collects:

- Furniture, Indoor & Outdoor
- Furnishing & House Hold Items
- Home Improvements
- Appliances & Electronics
- Children & Infant Provisions
- Clothing



We find it heartbreaking that there are those who don't have a bed to sleep on, especially our Veterans who have served to protect the rights we exercise every single day.

We at Make A Home Foundation do everything we can, to try and change these unsettling truths and make our communities happier for all.